

Specifications

備注 (Remark)

1. 材料 (Material)

膠芯: PA9T /LCP+30%G.F UL94V-0, 顏色: 黑色

Housing: PA9T/LCP+30%G.F UL94V-0, Color: Black

端子: 磷銅

Contact: Phosphor Bronze

2. 特性 (characteristics):

額定電流: 3.00AMP

Rating Current: 3.00AMP

接觸阻抗: 20mΩ Max

Contact Resistance: 20mΩ Max

絕緣阻抗: 1000MΩ Min

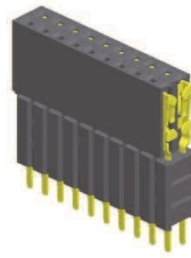
Insulating Resistance: 1000 MΩ Min

耐電壓: AC 1000V/分钟

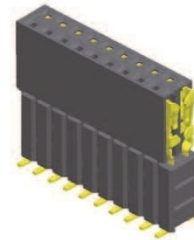
Withstanding Voltage: AC 1000V/Minute

溫度範圍: -40° C to +105° C

Temperature Range: -40° C to +105° C



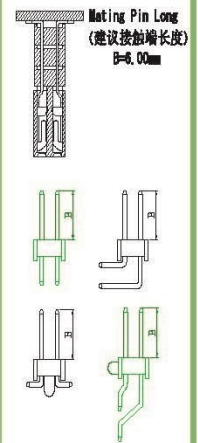
BF254-2CPXXX850X1



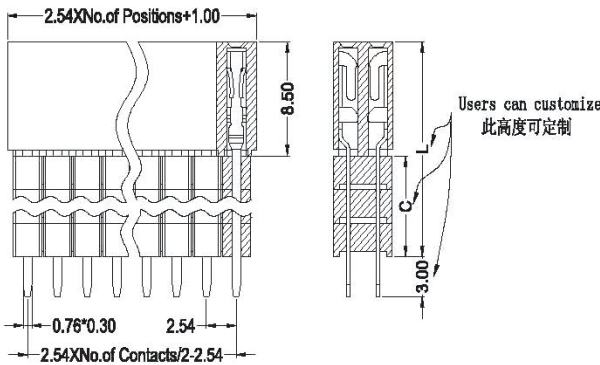
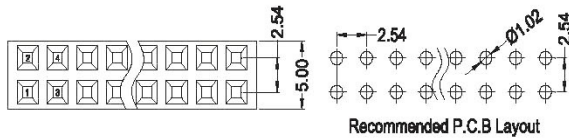
BF254-2CSXXX850X1



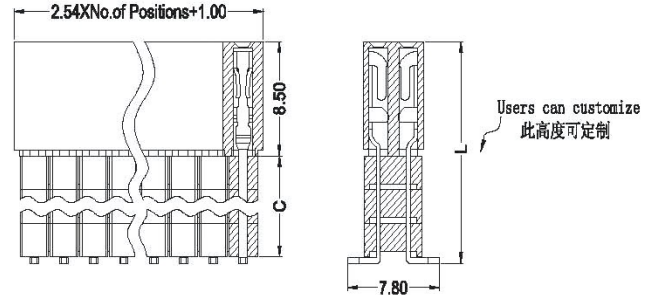
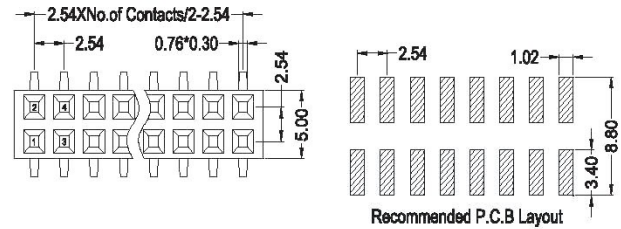
Mating With/配對公座:



FEMALE HEADER



PART NO	DIM "C"	DIM "L"
BF254-2CPXXX850X1	2.5	11.0
BF254-2C1PXXX850X1	5.0	13.5
BF254-2C2PXXX850X1	7.5	16.0



PART NO	DIM "C"	DIM "L"
BF254-2CSXXX850X1	2.5	11.4
BF254-2C1SXXX850X1	5.0	13.9
BF254-2C2SXXX850X1	7.5	16.4

BF254-2C

X

XX

XX

850

X

1

Contact Shape:
P: Straight
S: SMT

No. Of Pins Per Row
02~40P

Contact Plating
Full Of Gold
G0=0.8u"
~
G9=30u"
S1=Ordinary Tin Plated
S2=Matte Tin Plated
S3=Tin-plated High-temperature

Packing
A: PE Bag
R: Tape & Reel
T: Tube
D: Tube+CAP
E: Tray